

Technical Note

SRTM V3 Terrain Data in Visualyse

Full information on the Terrain module can be found in the “Modules User Guide” which can be accessed from the “Help” menu in Visualyse.

The full list of supported terrain formats can be found on page 29 of the “Modules User Guide”

We don't ship terrain data on DVD but we do have some data that is downloadable from one of our servers as detailed below:

SRTM V3 Processed Data

Please note this data is only available if you are running at least version 7.9.0 of Visualyse 7. If you would like details on how to upgrade to this version please contact us at info@transfinite.com

The STRM V3 data is fully described here:

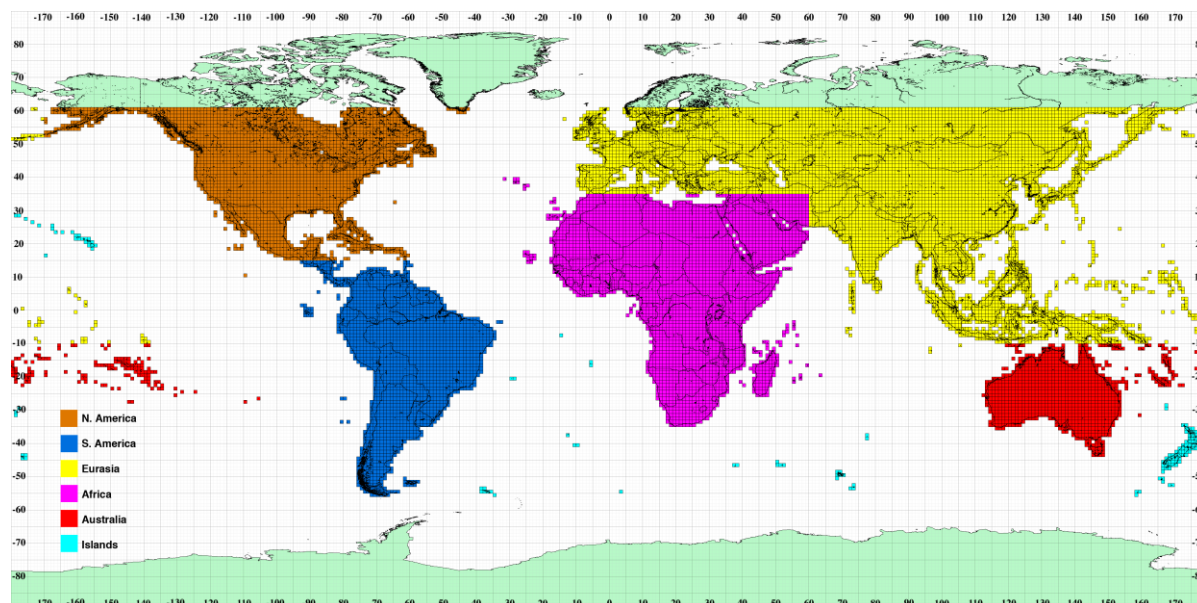
https://lpdaac.usgs.gov/products/measures_products_table/srtmg13

Note: this data set is derived using the *Averaging Method* as described in this document:

https://lpdaac.usgs.gov/sites/default/files/public/measures/docs/NASA_SRTM_V3.pdf

This terrain data covers below 60 degrees in latitude at a resolution of 3 arc seconds (about 90m).

Due to the resolution of this data the world is divided into areas (see picture below) where each area is can be many gigabytes in size.



The URLs to download the data (and the approximate download size) are shown below:

Africa (3GB):

http://downloads.transfinite.com/terraindownloads/Africa_SRTM_HGT_SWBD_MERGED_V3_0.zip

Australia (1GB):

http://downloads.transfinite.com/terraindownloads/Australia_SRTM_HGT_SWBD_MERGED_V3_0.zip

Eurasia (5GB):

http://downloads.transfinite.com/terraindownloads/Eurasia_SRTM_HGT_SWBD_MERGED_V3_0.zip

Islands: (100 MB)

http://downloads.transfinite.com/terraindownloads/Islands_SRTM_HGT_SWBD_MERGED_V3_0.zip

North America: (2 GB)

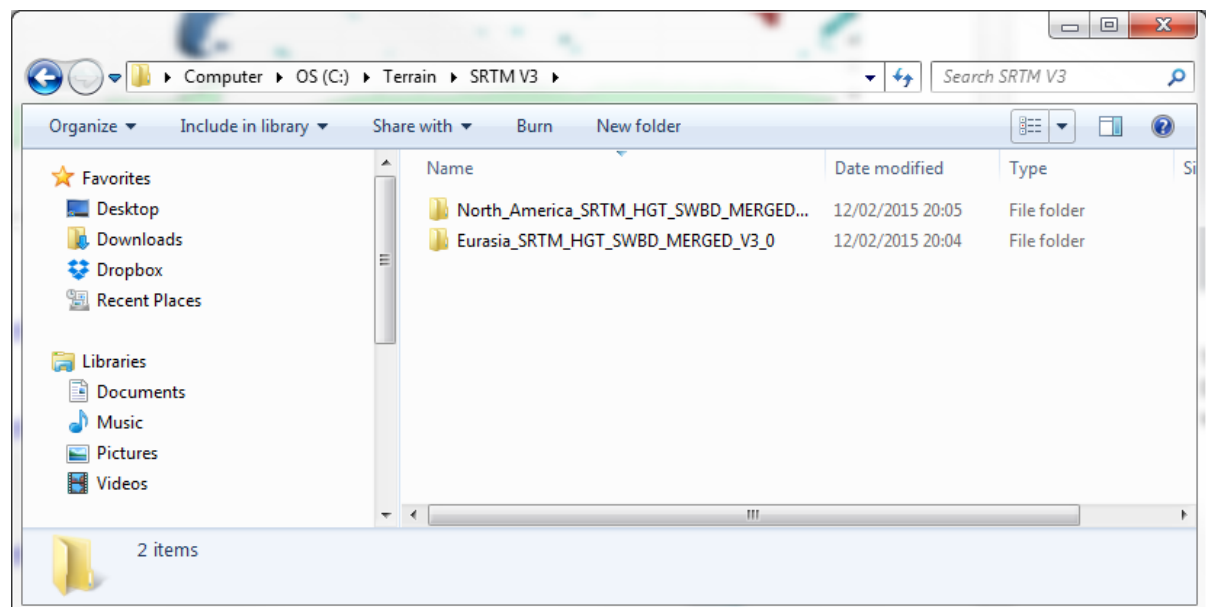
http://downloads.transfinite.com/terraindownloads/North_America_SRTM_HGT_SWBD_MERGED_V3_0.zip

South America: (1GB)

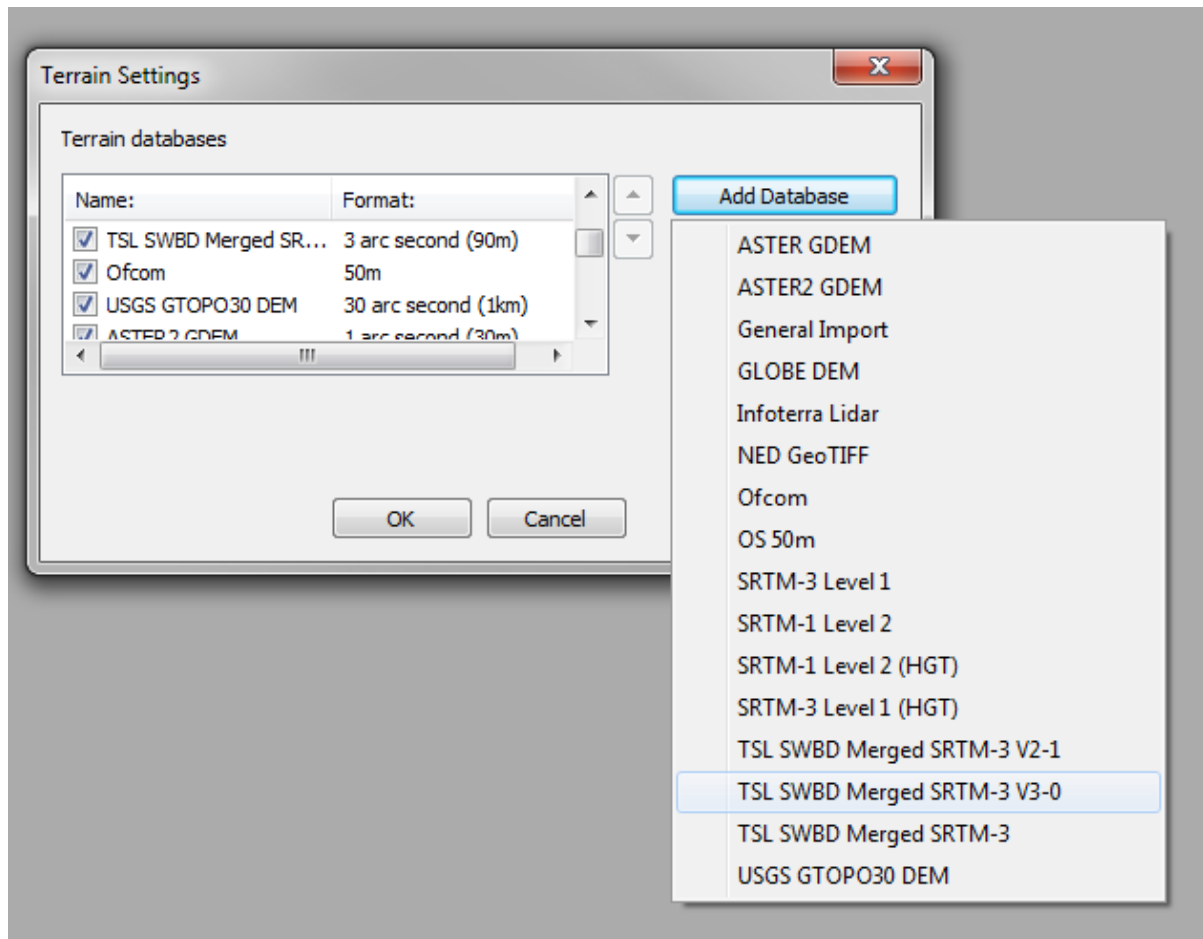
http://downloads.transfinite.com/terraindownloads/South_America_SRTM_HGT_SWBD_MERGED_V3_0.zip

Once download create a directory with a suitable name (“c:\Terrain\SRTM V3” in this instance)

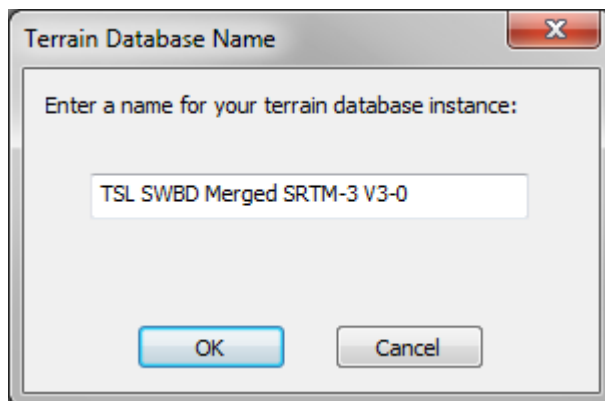
Unzip the files into this newly created directory so it looks like the following:



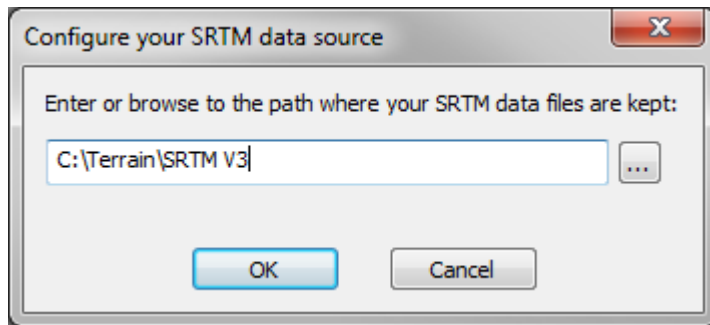
Then in Visualyse go to “File | Terrain Settings” and in the resulting dialog box click on “Add Database” and select the entry “TSL SWBD Merged SRTM-3 V3-0” (note: the name refers to the fact Transfinite have processed the SRTM V3 data into a format that is a lot quicker to load in Visualyse)



In the resulting dialog enter a suitable descriptive name for this Terrain Database.



Then in the next dialog enter the location of the root directory for the data (in this case it would be C:\Terrain\SRTM V3)



You should then be all set to create new terrain regions. This process is fully described in the Modules User Guide (4.5.2 Interactive Creation of Terrain Regions) but should you need help then please send us an e-mail on support@transfinite.com